

# Join the Collective



**Find out more about the  
collective and the  
process of applying**



# Contents

- Introduction ..... 1
- Why work with us? ..... 3
- Process of applying ..... 5
- I’ve been accepted, what happens next? ..... 6
- During your time in the collective ..... 7
- Transparency of costs ..... 9

## **An introduction from the Managing Director**

Elysian Fyre

Nirvanas Arts Collective was created to showcase the amazing talents of neurodivergent and disabled artists, crafters and practitioners, and widen their opportunity in the arts sector. . As an artist who has lived experience of chronic illness and disability, I understand the difficulties of selling your own creations when battling with fluctuating symptoms and limitations. During periods of better health, my own Etsy shop gave me so much joy and passion to go forward in a creative career. I loved sharing my creations with others and seeing the joy my creations gave to others. However, I could not have done this had my symptoms not reduced.

## Continued...

Running a small creative business is often 30% creating and 70% managing a shop. It is highly demanding and there are many, some like my past-self, who are unable or struggle to sell their creations without extra support and accommodations. Our service ensures our makers and artists can focus on the 30% whilst we sort the rest.

## Contact information:

Email: [Elysiannac@gmail.com](mailto:Elysiannac@gmail.com)

Phone/text: 07834578705

(available on WhatsApp)



# **Why work with us?**

## **Who is the collective for?**

**The collective is for disabled and neurodivergent artists. These artists may need extra support to sell their art in person or online.** Do not worry about feeling not ‘disabled enough’ or ‘too disabled’ to join the collective. If you feel you would benefit and have a passion for art, please apply.

## **What do we offer?**

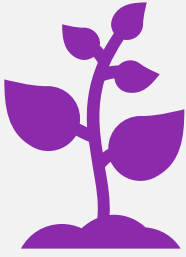
We call ourselves the Etsy for disabled and neurodivergent artists. But, unlike Etsy, we manage the sales, photographing and promoting of your artwork.

## **Common Concerns about joining the collective**

We will make sure we can support you and provide accessible ways to join. Any questions or concerns about the collective or application, please contact us!

4

# How do you benefit?



**Grow your  
creative  
career**



**Show your  
work to more  
people**



**Develop  
professional  
skills**



**Empowered to  
pursue creative  
aspirations**



**Opportunity to  
earn money**



**Better overall  
wellbeing**

## Process of Applying

We apply a process to ensure fairness. We take artists of any level and of any media. We limit our intake to ensure each artists gets the best quality support.



Firstly, you will complete an enquiry form. Find it on our website.



Once we get the form, the directors will consider your application.



Within 14 working days of your application, you will get a decision.

6

## **I've been accepted, what happens next?**

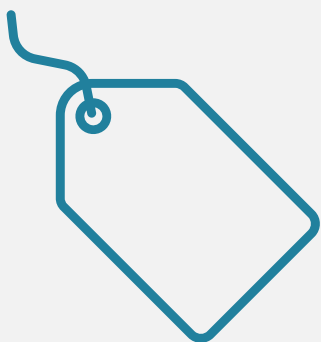
Once you have been accepted, we will contact you very quickly. We will ask about any accommodations or extra support you may need.



We will ask to discuss any queries and concerns you have, and what we offer that may help you.



Next, we will arrange sending artwork and products to us.

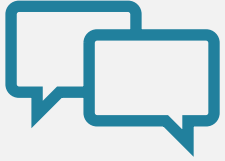


You will need to tell us how much you want to sell your products. We can support you to price items and so you make what you need.



7

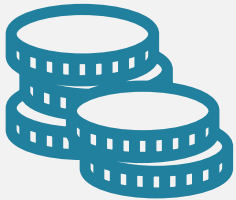
## **During your time with the collective**



We will talk with you, including to send more items, if needed.



We will sell and advertise your artwork online and take your items to art markets.



Any profit, profit means money you make, are paid monthly.



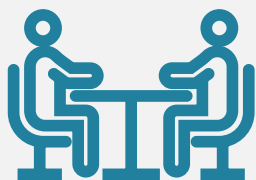
We will tell you of items that are selling well. We will also tell you if there are popular items to make.

8

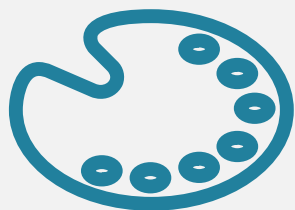
## During your time with the collective



You will have a page all about you and your art on our website!



You can ask for 1-to-1 support when needed.



You will be asked first to display your artwork in any exhibitions we put on.



Across the year we will invite you to online sessions with the collective.



## **Transparency of costs**

On all items sold, we take 30% commission plus shipping cost.

We take 30% commission as our website costs money to run, and we feel we provide good, extra services for you.

Shipping costs are determined by the size and weight of your artwork. We do not profit from these charges. If you need to find out more information about this, please contact us or read through the 'long read' version of this PDF. Available on our website.